

## STRUCTURED CABLING CATALOGUE

Copper cables & connectivity - Optical fiber cables - Wall mounted cabinets & accessories





## ABOUT IDCABLES..... 4-5

### CATEGORY 6A SYSTEM ..... 7-16

Cable S/FTP Cat.7 LSZH .....	7
Cable F/FTP Cat.6A LSZH .....	8
Cable F/UTP Cat.6A LSZH .....	9
Cable F/FTP Grade 3 TV LSZH Cca / Att.-85dB .....	10
Cable F/FTP Grade 3 TV LSZH Dca .....	11
RJ45 keystone jack Cat.6A fully shielded .....	12
RJ45 outlet Cat.6A fully shielded .....	13
RJ45 field connector Cat.6A fully shielded.....	14
RJ45 coupler Cat.6A Fem/Fem .....	15
Patchcord Cat.6A S/FTP LSZH.....	16

### CATEGORY 6 SYSTEM ..... 17-21

Cable F/UTP Cat.6 LSZH .....	17
RJ45 Keystone jack Cat.6 fully shielded .....	18
RJ45 outlet Cat.6 fully shielded.....	19
RJ45 Plug Cat.6 shielded for solid wires .....	20
Patchcord Cat.6 F/UTP .....	21

### ACCESSORIES FOR RJ45 CONNECTIVITY ..... 23-27

Patch panel 1U 24 Ports for shielded keystone jacks .....	23
Faceplate 1 or 2 ports RJ - 45mm x 45mm .....	24
Surface mounting box 80mm x 80mm - 1 port RJ .....	25
Splitter Cat.6 RJ45 2 ports .....	26
DIN support for RJ45 keystone jack - 1 port .....	27

### OPTICAL FIBER CABLES ..... 28-31

Cable FO tight buffered indoor/outdoor .....	28
Cable FO loose tube indoor/outdoor .....	29
Cable FO loose tube armored outdoor .....	30
Cable FO loose tube outdoor .....	31

### WALL MOUNTED RACKS 19 INCHES & ACCESSORIES ..... 33-41

Wall mounted rack 19 inches 450mm Depth .....	33
Wall mounted rack 19 inches 600mm Depth .....	34
Castors Kit for wall mounted racks .....	35
Fan unit for wall mounted racks .....	36
Screws, washers and cage nuts for 19 inches accessories .....	37
PDU 19inches 8 sockets .....	38
Fixed shelve 250mm depth .....	39
Brush panel 1U 19 inches .....	40
Cable organizer 4 rings 19 inches .....	41
Obturator panel 1U 19 inches.....	42

### AUDIO/VIDEO CORDS & TOOLS..... 43-47

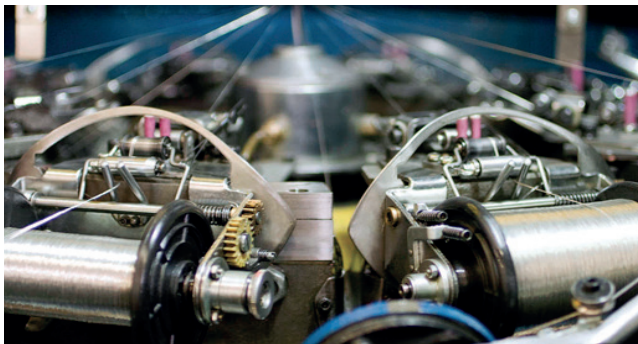
HDMI 2.0 Moulded patchcord Male-Male.....	43
Cabling tester.....	44
Tooling and testing Kit « premium » .....	45
Tooling and testing Kit « professionnall » .....	46
Stripping tools .....	47

### TECHINAL INFORMATION..... 48-50

Understand cable design .....	49
Categories and cable types (ISO 11801) .....	49
Insertion loss according to fiber cable types (ISO 11801) .....	50
Material properties .....	50



## EXPERTS AT YOUR SERVICE



ID CABLES relies on a "Manufacturing Division", made up of specialized factories, some of them with more than 50 years experience, in various fields of application related to industry and construction.

ID CABLES has a centralized logistics center, located in South of Paris - Villabé (91) of more than 30,000 m<sup>2</sup>. This logistics platform is fully automated with state-of-the-art machinery.



Created  
**2010**



FTE  
**12**



Product references  
**1800**

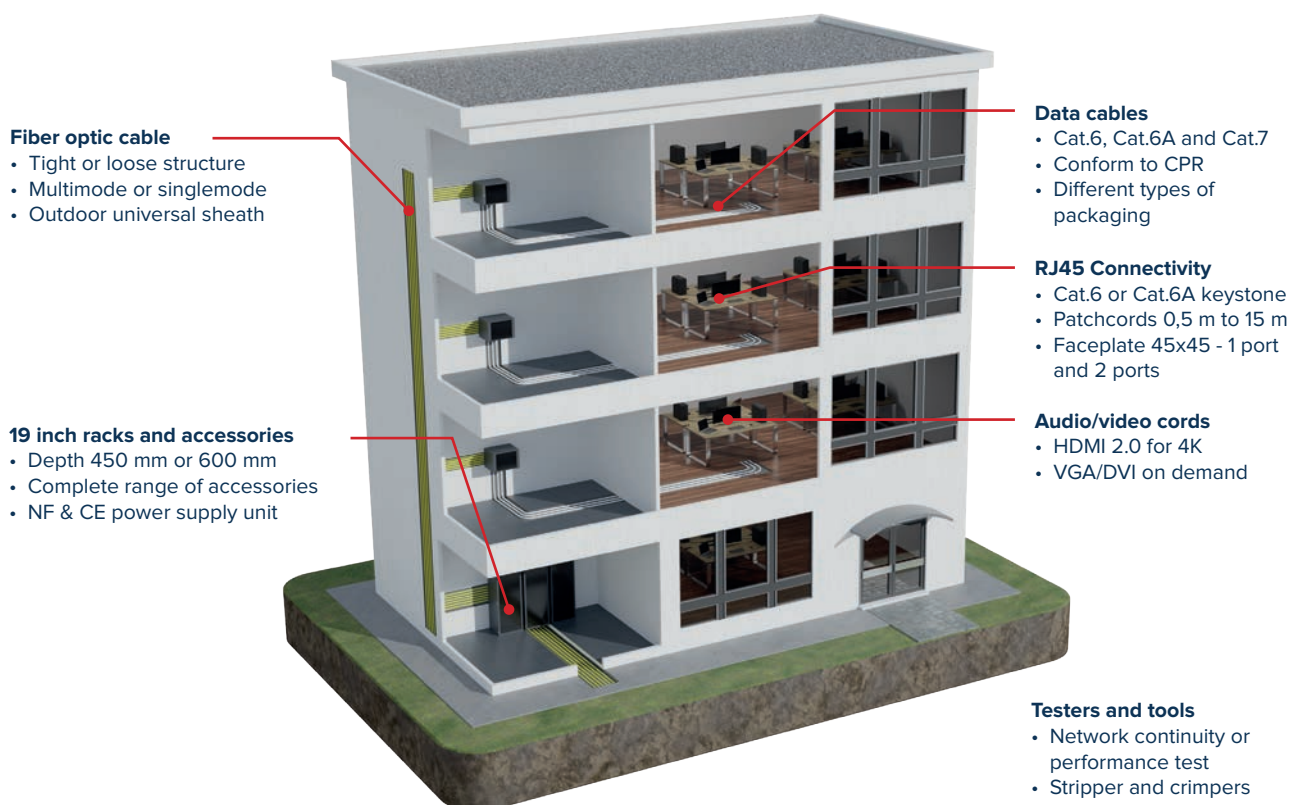


Storage area (m<sup>2</sup>)  
**30.000**

## GENESIA : A COMPLETE SOLUTION FOR IP CABLING

Based on the industrial experience in the field of connectors of its sister companies, ID CABLES offers through its new brand GENESIA, a complete network and audio-video cabling system.

With the principle of having a short range but which makes it possible to address all the needs for commercial or residential buildings



## A QUALITY OFFER

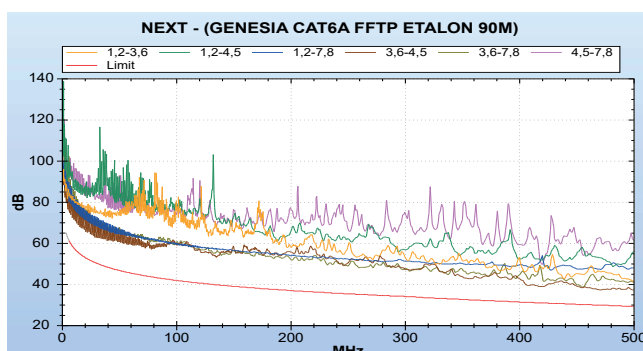
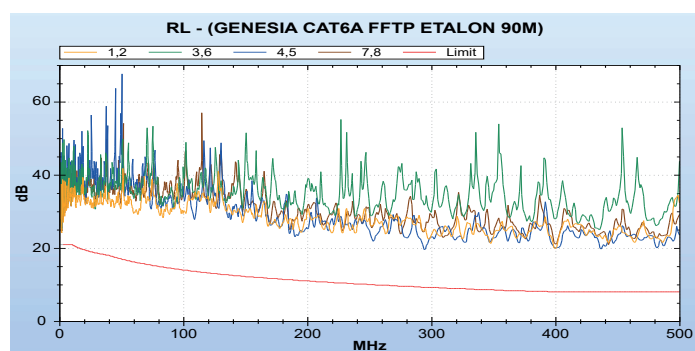
With several tens of thousands of kilometers of LAN cables manufactured each year, quality is at the heart of our concerns.

It is with the same level of requirement and well-established quality processes that we offer this range of high-performance connectors.

Tests carried out with 90m of Cat.6A F/FTP cable (FF4P6ASH) and Cat.6A RJ45 connectors (IDKJ6AS)

NEXT margin: 7.3 dB

RL margin: 7.7 dB



Automated manufacturing methods and optimization know-how allow us to offer you the GENESIA range at an excellent price-quality ratio.

The IPnetwork is governed by a strict normative framework which requires the use of high-performance materials that last over time because it is one of the only sectors where 100% of installations are accepted.

However, quality does not always rhyme with high prices because it is now possible to offer connectivity solutions at an affordable cost.

## INGENIOUS PACKAGING

Always in a logic of service and practicality, we have developed clever packaging that allows better use of products on site.

ref. IDKJ6AS100

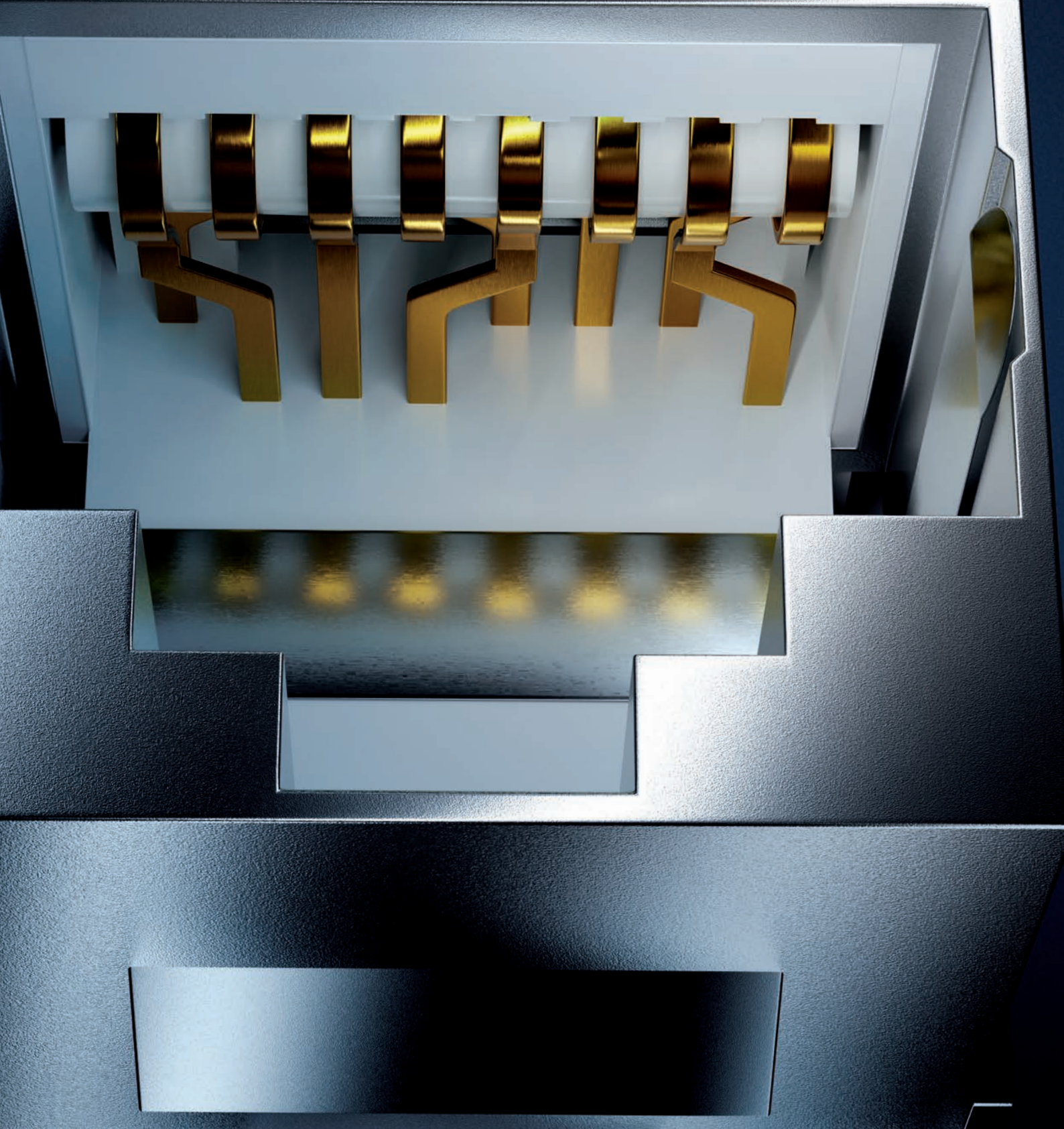


ref. IDVEC200

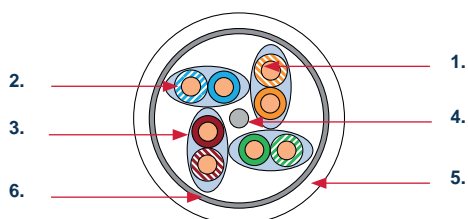




CAT 6A







1. Conductor : Solid copper AWG23/1
2. Insulation : Polyethylen Skin Foam Skin
3. individual shielding : Al/PeS foil
4. Drain wire : Solid tinned copper
5. Overall shielding : tinned copper braid
6. Outer jacket : LSZH – White RAL 9003



« A robust cable! perfectly suited to disturbed environments. It is the right choice for installations in hospital or industrial environment where electromagnetic perturbations are the highest »

## BENEFITS

- Cable suitable for all IP applications up to 10 Gbits/s
- Excellent electromagnetic immunity for both low frequency and high frequency disturbances
- Conforming to CPR Dca

## DESCRIPTION

Can be used in a horizontal or vertical configuration (backbone), it is the foundation of IP distributed network.

Its shielding allows it to be used in a disturbed environment and ensures proper operation up to 600 MHz.

Its internal structure provides it with significant margins with all current standards.

## APPLICATION

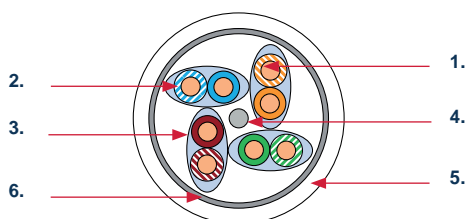
- Ethernet base T up to 10 Gbits/s
- VoIP & ISDN
- IEEE 802.3 af/at/bt : PoE, PoE+ and 4PPoE

## STANDARDS

- **CABLE** : IEC 61156-5 CAT7
- **SYSTEME** : ISO 11801 ED.3 CLASS EA OR F
- EIA/TIA 568-2.D CAT.6A

## ORDERING INFORMATION

REF	DESIGNATION	DIAMETER	PACKING
SF4P7SH	Cables 100 Ohms S/FTP 4P CAT 7 LSZH	7.5 mm	D.500m
SF8P7SH	Cables 100 Ohms S/FTP 2X4P CAT 7 LSZH	7.5 x 15.3 mm	D.500m



1. Conductor : Solid copper AWG23/1
2. Insulation : Polyethylen Skin Foam Skin
3. individual shielding : Al/PeS foil
4. Drain wire : Solid tinned copper
5. Overall shielding : Al/PeS foil
6. Outer jacket : LSZH – White RAL 9003



« The best choice of cable for smart buildings: it makes it easier to deploy connected objects (IoT) due to its transmission performance and its ability to dissipate temperature rises related to Power Over Ethernet (PoE) »

## BENEFITS

- Cable suitable for all IP applications up to 10 Gbits/s
- Excellent electromagnetic immunity thanks to its double shielding
- Conforming to CPR Dca

## DESCRIPTION

Can be used in a horizontal or vertical configuration (backbone), it is the foundation of IP distributed network.

This cable allows the transmission of digital and analog signals for voice, video links and data transmission up to 500 MHz.

## APPLICATION

- Ethernet base T up to 10 Gbits/s
- VoIP & ISDN
- IEEE 802.3 af/at/bt : PoE, PoE+ and 4PPoE

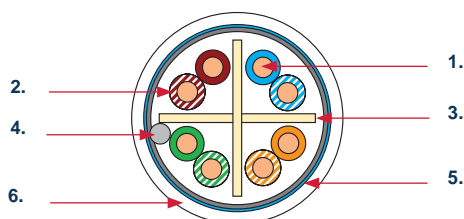
## STANDARDS

- **CABLE** : IEC 61156-5 CAT.6A
- **SYSTEM** : ISO 11801 ED.3 CLASS EA
- EIA/TIA 568-2.D CAT.6A

## ORDERING INFORMATION

REF	DESIGNATION	DIAMETER	PACKING
FF4P6ASH	Cable 100 Ohms F/FTP 4P Cat.6A LSZH	7.4 mm	C.100m / D.500m / D.1000m
FF8P6ASH	Cable 100 Ohms F/FTP 2X4P Cat.6A LSZH	7.4 x 15.3 mm	D.500m





1. Conductor : Solid copper AWG23/1
2. Insulation : Polyethylen
3. Central fillet : thermoplastic cross
4. Drain wire : Solid tinned copper
5. Overall shielding : Al/PeS foil
6. Outer jacket : LSZH – White RAL 9003



« A structure with a general screen that allows rapid preparation of the cable while ensuring quality electromagnetic immunity. It is the Cat.6A version of the best seller F/UTP »

### BENEFITS

- Cable suitable for all IP applications up to 10 Gbits/s
- Good electromagnetic immunity thanks to its overall shielding
- Conforming to CPR Dca

### DESCRIPTION

Can be used in a horizontal or vertical configuration (backbone), it is the foundation of IP distributed network.

This cable allows the transmission of digital and analog signals for voice, video links and data transmission up to 500 MHz.

### APPLICATION

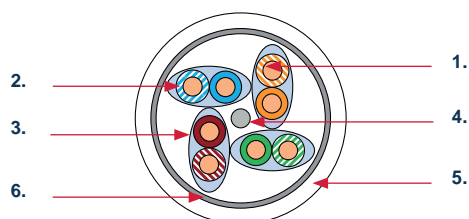
- Ethernet base T up to 10 Gbits/s
- VoIP & ISDN
- IEEE 802.3 af/at/bt : PoE, PoE+ and 4PPoE

### STANDARDS

- **CABLE** : IEC 61156-5 CAT6A
- **SYSTEM** : ISO 11801 ED.3 CLASS EA
- EIA/TIA 568-2.D CAT6A

### ORDERING INFORMATION

REF	DESIGNATION	DIAMETER	PACKING
<b>F4P6ASH</b>	Cable 100 Ohms F/UTP 4P CAT6A LSZH	7.9 mm	D.500m
<b>F8P6ASH</b>	Cable 100 Ohms F/UTP 2X4P CAT6A LSZH	7,4 x 16.0 mm	D.500m



1. Conductor : Solid copper AWG23/1
2. Insulation : Polyethylen Skin Foam Skin
3. individual shielding : Al/PeS foil
4. Drain wire : Solid tinned copper
5. Overall shielding : Al/PeS foil
6. Outer jacket : LSZH – White RAL 9003



« A demanding cable at all levels, it is specifically designed to pass coupling attenuation tests at -85dB and its sheathing compound is CPR compliant Cca s1,d1,a1 »

### BENEFITS

- Residential Cable GRADE 3 TV mxed Network and TV Usage
- Excellent electromagnetic immunity, complying with the -85dB limit for coupling attenuation (BEDEA tube)
- Conforming to CPR Cca (s1,d1,a1)

### DESCRIPTION

It makes possible to carry out IP and TV residential cabling in accordance with the new standard XP C 90-483 version 2019.

Its specific structure allocates a bandwidth of 500 MHz for speeds up to 10 Gbit/s.

The 7/8 pair (brown) has a maximum operating frequency of 2.2 GHz ideal for TV transmissions including satellite.

### APPLICATION

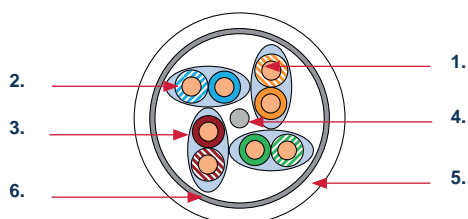
- Ethernet base T up to 10 Gbits/s Pairs 1,2 et 3
- TNT and Satellite on pair 4 (DVB-T/T2 et DVB-S/S2)
- IEEE 802.3 af/at/bt : PoE, PoE+ and 4PPoE

### STANDARDS

- **CABLE** : XPC 93-531-17
- **SYSTÈM** : UTE C 90483 GRADE3 TV VERSION 2019

### ORDERING INFORMATION

REF	DESIGNATION	DIAMETER	PACKING
G3C4PFFTV	Cable 100 Ohms grade 3 TV 4P F/FTP 2.2 GHz LSZH Cca	7.6 mm	D.500m



1. Conductor : Solid copper AWG23/1
2. Insulation : Polyethylen Skin Foam Skin
3. individual shielding : Al/PeS foil
4. Drain wire : Solid tinned copper
5. Overall shielding : Al/PeS foil
6. Outer jacket : LSZH – White RAL 9003



« The perfect product to be in tune with the times; it makes it possible to create high-end residential networks perfectly suited to very high speed transmissions, both for Internet »

## BENEFITS

- Residential Cable GRADE 3 TV mxd Network and TV Usage
- Excellent electromagnetic immunity
- Conforming to CPR Dca

## DESCRIPTION

It makes possible to carry out IP and TV residential cabling in accordance with the new standard XP C 90-483 version 2019.

Its specific structure allocates a bandwidth of 500 MHz for speeds up to 10 Gbit/s.

The 7/8 pair (brown) has a maximum operating frequency of 2.2 GHz ideal for TV transmissions including satellite.

## APPLICATION

- Ethernet base T up to 10 Gbits/s Pairs 1,2 et 3
- TNT and Satellite on pair 4
- IEEE 802.3 af/at/bt : PoE, PoE+ and 4PPoE

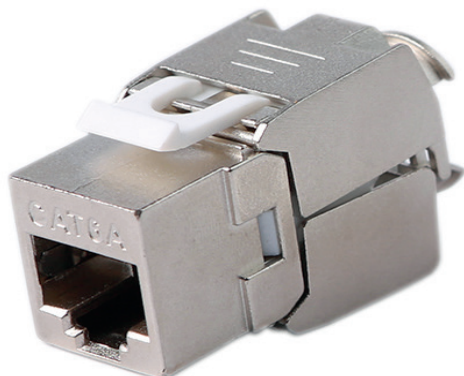
## STANDARDS

- **CABLE** : XPC 93-531-17
- **SYSTEME** : UTE C 90483 GRADE3 TV

## ORDERING INFORMATION

REF	DESIGNATION	DIAMETER	PACKING
<b>G34PFFTV</b>	Cable 100 Ohms grade 3 TV 4P F/FTP 2.2 GHz LSZH Dca	7.6 mm	C.100m / D.500m





### BENEFITS

- Quick toolless termination and 360° grounding
- Keystone format and shallow depth
- Insert bar compatible with large diameter cables (in particular Cat.7a)

### DESCRIPTION

The IDKJ6AS RJ45 keystone jack benefits from excellent electrical performance which ensures good NEXT and RETURN LOSS margins when used in Class Ea or Grade 3TV.

Its Keystone format and its compactness allow compatibility with all the accessories on the market.



« A practical product at all levels because it is easy to install and its electrical performance does not reserve any unpleasant surprises during the field acceptance test : Guaranteed conformity! »

### APPLICATION

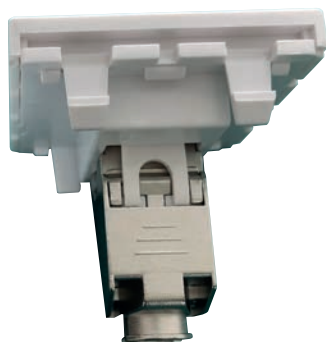
- Ethernet base T up to 10 Gbits/s
- VoIP & ISDN
- IEEE 802.3 af/at/bt : PoE, PoE+ and 4PPoE
- Residential Grade 3 TV

### STANDARDS

- **CONNECTORS** : IEC 60603-7-51
- **SYSTEM** : ISO/IEC 11801 Ed3.0 Class Ea
- UTE XPC 90483

### ORDERING INFORMATION

REF	DESIGNATION	PACKING
IDKJ6AS	RJ45 keystone jack Cat.6A toolless - fully shielded- box	8
IDKJ6AS100	RJ45 keystone jack Cat.6A toolless - fully shielded- bucket	100



« Ideal for installation in a premise environment, its 45x45 format is compatible with the majority of supports: floor box, surface-mounted frame or pole... it adapts to any style of fixture »

## BENEFITS

- The socket is pre-mounted on the 45 faceplate, which allows quick and practical integration
- Toolless termination and 360° grounding
- Integrated label holder and dust shutter
- Insert bar compatible with large diameter cables (in particular Cat.7a)

## DESCRIPTION

The IDPLA6AS451C outlet has excellent performance when used in Class Ea or Grade 3TV.

Its 45x45 format allows direct installation on clip-on supports.

## APPLICATION

- Ethernet base T up to 10 Gbits/s
- VoIP & ISDN
- IEEE 802.3 af/at/bt : PoE, PoE+ and 4PPoE
- Residential Grade 3 TV

## STANDARDS

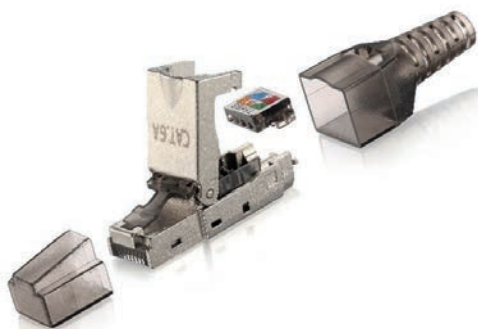
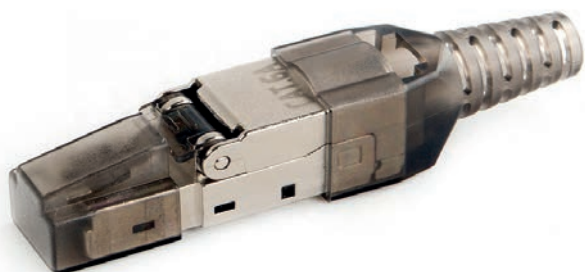
- **CONNECTORS** : IEC 60603-7-51
- **SYSTEM** : ISO/IEC 11801 Ed3.0 Class Ea
- UTE XPC 90483

## ORDERING INFORMATION

REF	DESIGNATION	PACKING
IDPLA6AS451C	RJ45 outlet Cat.6A toolless - fully shielded with 45x45 faceplate - box	8

# IDCORIG6AFS

## RJ45 field connector Cat.6A fully shielded



« A connector suitable for direct connection of IP equipment: Wifi terminal, video surveillance camera... no need to create a cut-off point, assembly is done directly on the solid cable »

### BENEFITS

- Fast termination toolless by insert bar and 360° grounding
- Dust cap and back boots
- Circuit board compensation to ensure excellent performance

### DESCRIPTION

The IDCORIG6AFS RJ45 field connector is 360° shielded and benefits from excellent electrical performance which ensures good NEXT and RETURN LOSS margins when used in Class Ea.

The insert bar allows connection of the connector without tools while ensuring quality wiring thanks to its clear and visible color code.

### APPLICATION

- Ethernet base T up to 10 Gbits/s
- VoIP & ISDN
- IEEE 802.3 af/at/bt : PoE, Poe+ and 4PPoE

### STANDARDS

- **SYSTEM** : ISO/IEC 11801 Ed3.0 Class Ea
- EIA/TIA 568.2-D MPTL (Modular plug terminated link)

### ORDERING INFORMATION

REF	DÉSIGNATION	PACKING
IDCORIG6AFS	RJ45 field connectir toolless Cat.6A fully shileded - box	8





### BENEFITS

- Female / female coupler allowing link extension by adding RJ45 cords
- Keystone format, shielded and compact
- Creates an additional cut-off point but has very little impact on performance thanks to its compensation circuit

### DESCRIPTION

The IDCOUPL6A is a female/female coupler in keystone format.

Made from a high-performance printed circuit, it ensures continuity of transmission parameters.

### APPLICATION

- IP environnement commercial or industrial



« Very compact and efficient, it allows you to extend any link while ensuring good transmission quality »

### STANDARDS

- **SYSTEM** : ISO/IEC 11801 Ed3.0 Classe Ea (Channel)

### ORDERING INFORMATION

REF	DESIGNATION	PACKING
IDCOUPL6A	RJ45 coupler female/female Cat.6A fully shielded	Unit



« With its tab protection, it is easy to disconnect even in tight spaces. It is designed to resist bends and last despite many manipulations »

### BENEFITS

- Available in different lengths
- Excellent electromagnetic immunity thanks to its S/FTP structure
- Low smoke LSZH sheath
- Overmolded snagless protection

### DESCRIPTION

Intended to provide an adequate level of protection against electromagnetic interference.

The S/FTP cord provides Class Ea link performance that extends up to 500 MHz.

### APPLICATION

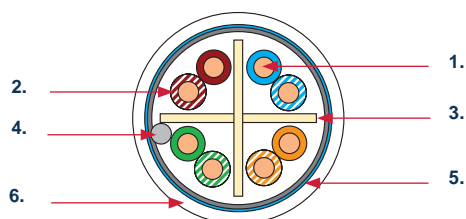
- Ethernet base T up to 10 Gbits/s
- VoIP & ISDN
- IEEE 802.3 af/at/bt : PoE, Poe+ and 4PPoE
- Residential Grade 3TV

### STANDARDS

- **CONNECTORS** : IEC 60603-7-51
- **SYSTEM** : ISO/IEC 11801 Ed3.0 Class Ea
- UTE XPC 90483

### ORDERING INFORMATION

REF	DESIGNATION	LENGTH	PACKING
IDCORD6A005	Patchcord Cat.6A S/FTP LSZH 0.5m	0.50m	Unit
IDCORD6A01	Patchcord Cat.6A S/FTP LSZH 1m	1m	Unit
IDCORD6A02	Patchcord Cat.6A S/FTP LSZH 2m	2m	Unit
IDCORD6A03	Patchcord Cat.6A S/FTP LSZH 3m	3m	Unit
IDCORD6A05	Patchcord Cat.6A S/FTP LSZH 5m	5m	Unit
IDCORD6A10	Patchcord Cat.6A S/FTP LSZH 10m	10m	Unit
IDCORD6A15	PatchcordCat.6A S/FTP LSZH 15m	15m	Unit



1. Conductor : Solid copper AWG23/1
2. Insulation : Polyethylen
3. Filler : Thermoplastic cross
4. Drain wire : Solid tinned copper
5. Overall shielding : Al/PeS foil
6. Outer jacket : LSZH – White RAL 9003



« The benchmark for network cables with an excellent price/performance ratio. It is mainly used in the commercial sector but is also used for all types of network implementations »

### BENEFITS

- Cable suitable for all IP applications up to 1 Gbit/s, see 5 Gbit/s with suitable switches
- Provided with general shielding by aluminum screen to avoid interference
- Conforming to CPR Dca

### DESCRIPTION

Can be used in a horizontal or vertical configuration (backbone), it forms the basis of a high-speed V.D.I (Voice Data Image) network.

This cable allows the transmission of digital and analog signals for voice, video links and data transmission up to 250 MHz.

### APPLICATION

- Ethernet base T up to 1 Gbits/s
- VoIP & ISDN
- IEEE 802.3 af/at/bt : PoE, PoE+ and 4PPoE

### STANDARDS

- **CABLE** : IEC 61156-5 CAT.6
- **SYSTEM** : ISO 11801 ED.3 CLASS E
- EIA/TIA 568-2.D CAT.6

### ORDERING INFORMATION

REF	DESIGNATION	DIAMETER	PACKING
<b>F4P6SH</b>	Cable 100 Ohms F/UTP 4P Cat.6 LSZH	7 mm	C.100m/D.500m/D.1000m
<b>F4P6SHB</b>	Cable 100 Ohms F/UTP 4P Cat.6 LSZH Box 305m	7 mm	B.305m
<b>F8P6SH</b>	Cable 100 Ohms F/UTP 2X4P Cat.6 LSZH	7 x 14.5 mm	C.100m/D.500m/D.1000m





« A practical product at all levels because it is easy to install and its electrical performance does not reserve any unpleasant surprises during the field acceptance test : Conformity guaranteed ! »

### BENEFITS

- Quick toolless termination and 360° grounding
- Keystone format and shallow depth
- Insert bar compatible with direct visualization of the color code

### DESCRIPTION

The IDKJ6S RJ45 keystone jack benefits from excellent electrical performance which ensures good NEXT and RETURN LOSS margins when used in Class E.

Its Keystone format and its compactness allow compatibility with all the accessories on the market.

### APPLICATION

- Ethernet base T up to 1 Gbits/s (5 Gbits/s with specific active material)
- VoIP & ISDN
- IEEE 802.3 af/at : PoE, PoE+

### STANDARDS

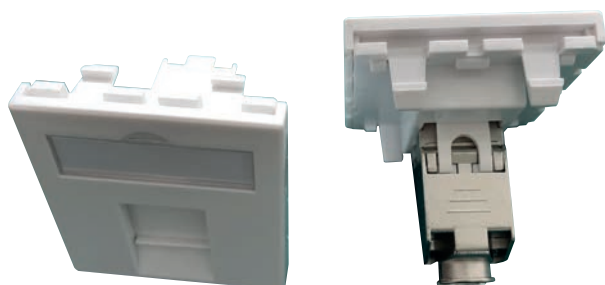
- **CONNECTORS** : IEC 60603-7
- **SYSTEM** : ISO/IEC 11801 Ed3.0 Class E

### ORDERING INFORMATION

REF	DESIGNATION	PACKING
IDKJ6S	RJ45 keystone jack Cat.6 toolless - fully shielded- box	8
IDKJ6S100	RJ45 keystone jack Cat.6 toolless - fully shielded- bucket	100

# IDPLA6S451C

## RJ45 outlet Cat.6 fully shielded



### BENEFITS

- The socket is pre-mounted on the 45 faceplate, which allows quick and practical integration
- Toolless termination and 360° grounding
- Integrated label holder and dust shutter

### DESCRIPTION

The IDPLA6S451C outlet has excellent performance when used in Class E.

Its 45x45 format allows direct installation on clip-on supports.



« Ideal for installation in a premise environment because its 45x45 format is compatible with the majority of supports: floor box, surface-mounted frame or pole... it adapts to any style of fixture »

### APPLICATION

- Ethernet base T up to 1 Gbit/s (5 Gbits/s with specific active material)
- VoIP & ISDN
- IEEE 802.3 af/at : PoE, PoE+

### STANDARDS

- **CONNECTORS** : IEC 60603-7
- **SYSTEM** : ISO/IEC 11801 Ed3.0 Class E

## ORDERING INFORMATION

REF	DESIGNATION	PACKING
IDPLA6S451C	RJ45 outlet Cat.6 toolless - fully shielded with 45x45 faceplate - box	8



« The value for money and fast solution to connect any equipment directly with a solid cable. However, it requires a suitable crimping tool and a large diameter boots »

### BENEFITS

- Shielded RJ45 plug suitable for rigid AWG23 cables
- Diameter on insulation between 1.2 mm < OD < 1.5 mm
- Nominal outer cable diameter 7.50mm+/-0.25mm
- 50 microninches gold contacts to offer the lowest resistivity and therefore the best connection performance

### DESCRIPTION

The IDPLUG6S RJ45 plug benefits from excellent electrical performance which ensures good margins for use in Class E.

The wiring bar allows termination of the connector for solid cables with large wire diameters.

It is an essential accessory to create a direct connection.

### APPLICATION

- Ethernet base T up to 1 Gbits/s (5 Gbits/s with specific active material)
- VoIP & ISDN
- IEEE 802.3 af/at : PoE, PoE+

### STANDARDS

- **CONNECTORS** : IEC 60603-7
- **SYSTEM** : ISO/IEC 11801 Ed3.0 Class E

### ORDERING INFORMATION

REF	DESIGNATION	PACKING
IDPLUG6S	RJ45 plug Cat.6 for solid wires - box	100





« With its tab protection, it is easy to disconnect even in tight spaces. It is designed to resist bends and last despite many manipulations »

### BENEFITS

- Available in different lengths
- Good electromagnetic immunity thanks to its FTP structure
- Overmolded snagless protection

### DESCRIPTION

Category 6 patch cord intended to guarantee a Class E level of performance in the context of an IP installation

### APPLICATION

- Ethernet base T up to 1 Gbits/s
- VoIP & ISDN
- IEEE 802.3 af/at : PoE, PoE+

### STANDARDS

- **CONNECTORS** : IEC 60603-7
- **SYSTEM** : ISO/IEC 11801 Ed3.0 Class E

### ORDERING INFORMATION

REF	DESIGNATION	LENGTH	PACKING
IDCORD6005	Patchcord Cat.6 FTP 0.5m	0.50m	Unit
IDCORD601	Patchcord Cat.6 FTP 1m	1m	Unit
IDCORD602	Patchcord Cat.6 FTP 2m	2m	Unit
IDCORD603	Patchcord Cat.6 FTP 3m	3m	Unit
IDCORD605	Patchcord Cat.6 FTP 5m	5m	Unit
IDCORD610	Patchcord Cat.6 FTP 10m	10m	Unit
IDCORD615	Patchcord Cat.6 FTP 15m	15m	Unit







### BENEFITS

- 24-port patch panel with automatic grounding and back support
- Integrated label holder, numbered from 1 to 24
- RAL 9005 Black Epoxy Paint

### DESCRIPTION

The IDPAN1U24 RJ45 patch panel includes a label holder. It allows optimized cabling management and provides grounding through its double skin.

It is also equipped with a rear cable holder and a ground stud.

### APPLICATION

- IP industrial and commercial

### STANDARDS

- **SYSTEM** : ISO/IEC 11801 Ed3.0



« A light and practical patch panel, of quality and a neat finish for your network installation »

### ORDERING INFORMATION

REF	DESIGNATION	PACKING
IDPAN1U24	Patch panel 1U 24 ports	Unit



### BENEFITS

- Faceplate with dust flap and integrated rotating label holder
- Several fixing points to ensure a good hold in trunking or floor boxes
- "Pure" white RAL 9003

### DESCRIPTION

The IDPLA45x faceplates are in the 45x45 format and adapt to most supports (trunking, feed boxes, floor boxes).

They are straight, equipped with a "guillotine" type dust flap and a large rotating label holder.

### APPLICATION

- IP industrial and commercial



« It is injected with quality materials and in particular a UV stabilizer which gives it long-lasting properties. It will not yellow over the years »

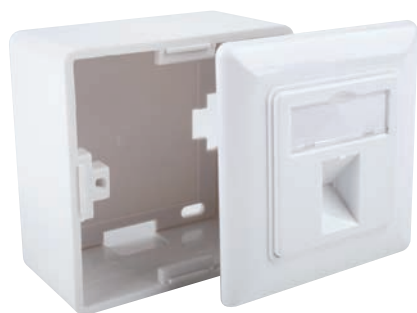
### STANDARDS

- **SYSTEM** : ISO/IEC 11801 Ed3.0

### ORDERING INFORMATION

REF	DESIGNATION	PACKING
IDPLA451	Faceplate 1 port RJ format 45x45 - box	10
IDPLA452	Faceplate 2 ports RJ format 45x45 - box	10





### BENEFITS

- A surface box and a faceplate in the same bag
- Dust flap and integrated rotating label holder
- The RJ45 connector support is in Zamac to ensure ground continuity
- "Pure" white RAL 9003

### DESCRIPTION

The IDSAIL80 is a kit that allows you to install an RJ45 socket in Keystone format on the surface.

### APPLICATION

- IP industrial and commercial

### STANDARDS

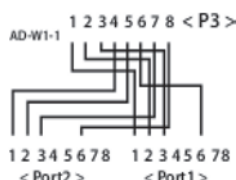
- **SYSTEM** : ISO/IEC 11801 Ed3.0



« An all-in-one product that allows installation of an RJ45 port even when there is no clipping equipment nearby »

### ORDERING INFORMATION

REF	DESIGNATION	PACKING
IDSAIL80	Surface mounting box 80x80 1 port RJ45	Unit



« When it is not possible to install a complementary link, this product is perfect for running two devices on the same cable. Warning ! It works in pairs because it must be installed at both ends of the link »

### BENEFITS

- Splitter 2 x the pair 1/2 and the pair 3/6 allowing 2 connections in 100 base T
- 15 cm cable for remote connection

### DESCRIPTION

The IDECLAT6 is an RJ45 socket splitter. It uses non-functional 100 base T pairs to double the capacity of a cable.

Allows 2 devices to operate at 100 base T on a single 4-pair cable.

### APPLICATION

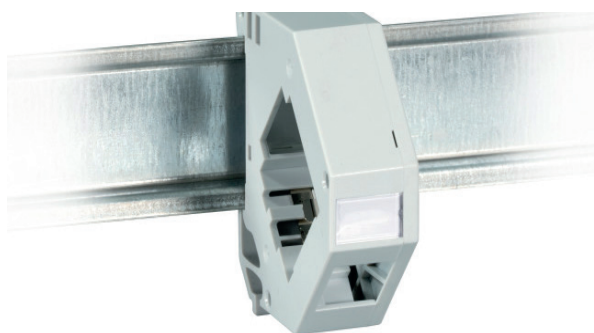
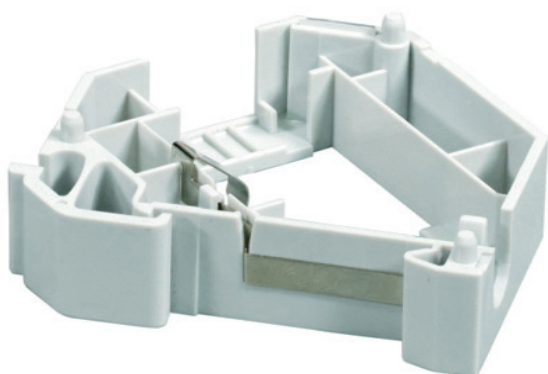
- IP industrial and commercial

### STANDARDS

- **SYSTEM** : ISO/IEC 11801 Ed3.0

### ORDERING INFORMATION

REF	DESIGNATION	PACKING
IDECLAT6	RJ45 splitter male to 2 females - Cat.6	Unit



«DIN rails are common in homes and industrial environments. Thanks to this adapter, it is easy to add sockets in boxes that are not always dedicated to IP networks »

### BENEFITS

- DIN support for RJ45 Keystone in thermoplastic
- Equipped with a ground connection directly in contact with the DIN rail
- Integrated label holder

### DESCRIPTION

This support allows an RJ45 connector in keystone format to be fixed on a DIN rail.

It is particularly suitable for electrical boxes when it comes to adding an RJ45 socket.

### APPLICATION

- IP industrial and commercial

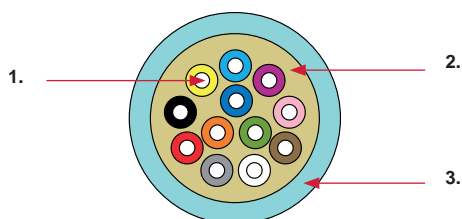
### STANDARDS

- **SYSTEM** : ISO/IEC 11801 Ed3.0

### ORDERING INFORMATION

REF	DESIGNATION	PACKING
IDRJDIN1P	DIN Support for RJ45 - format Keystone	Unit

## Cable FO tight buffered indoor/outdoor



1. Tight buffered optical fiber
2. E-glass yarns
3. LSZH jacket



« With its universal use, both indoors and protected outdoors, this cable is dedicated to multiple uses: bypasses, distribution... it is a real chameleon »

### BENEFITS

- Tight Buffered cable for direct connections
- Moderate rodent protection and limited protection against water
- Flame retardant

### DESCRIPTION

900 µm tight buffer fiber optic cable with IEC 304 color code.

It is made up of waterblocking fiberglass protection and an anti-UV treated LSZH outer sheath.

### APPLICATION

- Ethernet up to 400 Gbit/s
- For indoor distribution or protected indoor/outdoor connections

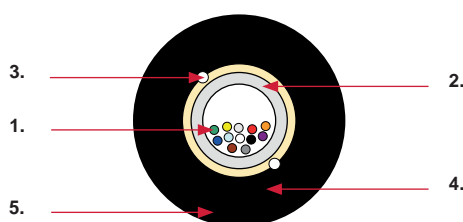
### STANDARDS

- Multimode IEC 60793-2-10
- Singlemode IEC 60793-2-50
- **FIRE BEHAVIOR** : IEC 60332-1
- CPR : Dca

### ORDERING INFORMATION

REF	DESIGNATION	PACKING
<b>6FOSIEOM3</b>	6 FO indoor/outdoor tight buffered OM3 LSZH Turquoise	D.2000m / cut on demand
<b>6FOSIEOS2</b>	6 FO indoor/outdoor tight buffered OS2 LSZH yellow	D.2000m / cut on demand
<b>12FOSIEOM3</b>	12 FO indoor/outdoor tight buffered OM3 LSZH Turquoise	D.2000m / cut on demand
<b>12FOSIEOS2</b>	12 FO indoor/outdoor tight buffered OS2 LSZH yellow	D.2000m / cut on demand





1. Loose tube optical fiber
2. Central tube filled with sealing gel
3. E-glass yarns
4. tearing rope
5. LSZH black jacket



« The perfect compromise for a connection from the outside to the inside of a building, because this cable is resistant to variable climatic conditions (humidity, temperature variations and UV) while being flame retardant. However, it is recommended to install it in a protected environment »

## BENEFITS

- Moderate rodent protection
- Good sealing for universal use
- Black LSZH sheath for good UV resistance
- Flame retardant

## DESCRIPTION

250 µm loose tube optical fiber cable with IEC 304 color code.

It is composed of a central tube with sealing gel, Waterblocking fiberglass protection, an outer sheath in UV-resistant LSZH

## APPLICATION

- **DATA** : Ethernet up to 400 Gbps
- Indoor and outdoor connections
- For inter-building connections or directly in trunking
- Connection by splicing or breaking out

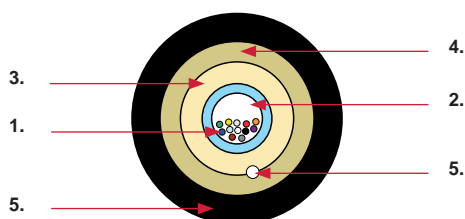
## STANDARDS

- Multimode IEC 60793-2-10
- Singlemode IEC 60793-2-50
- **FIRE BEHAVIOR** : IEC 60332-1
- CPR : Dca

## ORDERING INFORMATION

REF	DESIGNATION	PACKING
6FOLIEOM3	6 FO indoor/outdoor loose tube OM3 LSZH black	D.2000m
6FOLIEOS2	6 FO indoor/outdoor loose OS2 LSZH black	D.2000m
12FOLIEOM3	12 FO indoor/outdoor loose OM3 LSZH black	D.2000m
12FOLIEOS2	12 FO indoor/outdoor loose OS2 LSZH black	D.2000m

## Cable FO loose tube armored outdoor



1. Loose tube optical fiber
2. Central tube filled with sealing gel
3. E-glass yarns
4. Corrugated steel tape
5. Tearing rope
6. PE HD jacket



« Suitable for connections between buildings in ducts or directly buried. Its steel armor by corrugated tape is the mechanical protection per excellence, a real barrier against rodents! »

### BENEFITS

- Excellent sealing
- High resistance to crushing
- Can be buried unprotected
- Black polyethylene sheath for good UV resistance

### DESCRIPTION

250µm loose tube fiber optic cable with IEC 304 color code.

It is composed of a central tube with sealing gel, Waterblocking fiberglass protection, corrugated steel armor and an outer HDPE sheath.

### APPLICATION

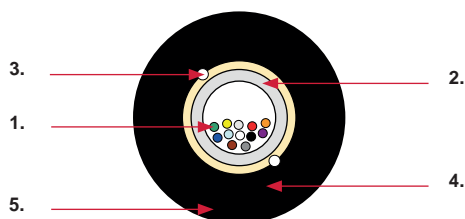
- Ethernet up to 400 Gbps
- External links
- Connection by splicing or breaking out

### STANDARDS

- Multimode IEC 60793-2-10
- Singlemode IEC 60793-2-50

### ORDERING INFORMATION

REF	DESIGNATION	PACKING
6FOLAEOS2	6 FO outdoor loose tube armored OS2 PEHD black	D.2000m / cut on demand
12FOLAEOS2	12 FO outdoor loose tube armored OS2 PEHD black	D.2000m / cut on demand



1. Loose tube optical fiber
2. Central tube filled with sealing gel
3. E-glass yarns
4. Tearing rope
5. PE HD jacket



« A compact structure with a central tube that protects the optical fibers even when the external constraints are important »

## BENEFITS

- Good rodent protection
- Excellent sealing
- Full dielectric armor
- Black polyethylene sheath for good UV resistance

## DESCRIPTION

250µm loose tube fiber optic cable with IEC 304 color code.

It is composed of a central tube with water-repellent gel, a Waterblocking fiberglass armor and an outer sheath in Polyethylene.

## APPLICATION

- Ethernet up to 400 Gbit/s
- External connections only
- Connection by splicing or breaking out

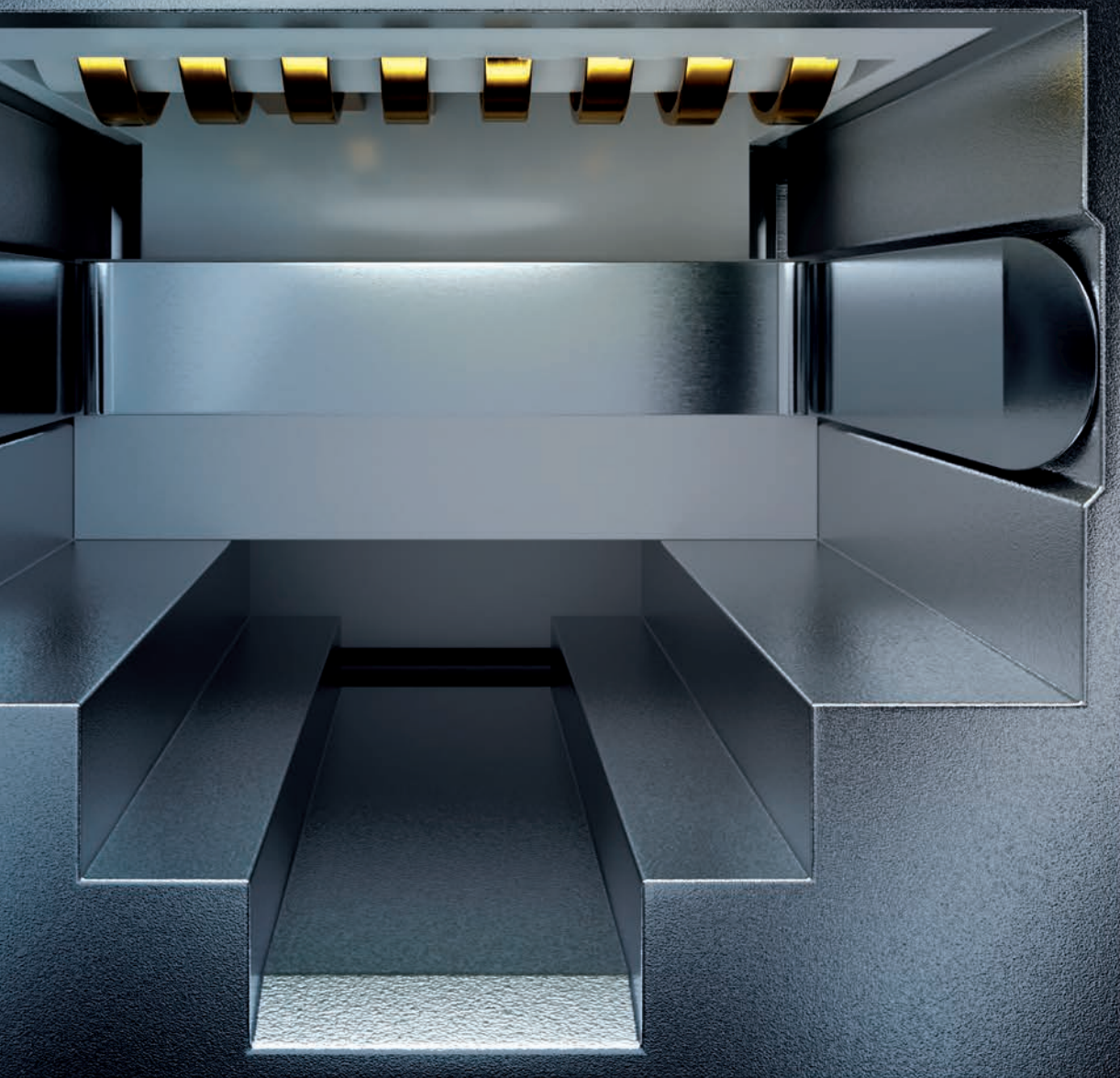
## STANDARDS

- Multimode IEC 60793-2-10
- Singlemode IEC 60793-2-50

## ORDERING INFORMATION

REF	DESIGNATION	PACKING
<b>6FOLEOS2</b>	6 FO outdoor loose tube OS2 PEHD black	D.2000m / cut on demand
<b>12FOLEOS2</b>	12 FO outdoor loose tube OS2 PEHD black	D.2000m / cut on demand

CAT 6A





# IDCOFxxU450

Wall mounted rack depth 450mm



## BENEFITS

- Elegant design, direct mounting system on the wall
- 19 inch upright with automatic grounding
- Reinforced structure that can ensure a static load of up to 90 kg
- Front door with 180° opening

## DESCRIPTION

The 19-inch IDCOFxxU450 cabinet has an elegant design and a reinforced structure allowing a static load of up to 90 kg.

It can be installed in any office or residential environment, while providing a perfect starting point for wiring distribution.

The box, delivered assembled, is easily fixed to the wall by a single person, which saves installation time. It has a direct hanging system on the wall.

Colour: black RAL9005  
Protection index: IP20



« A discreet box with a solid structure to create all medium-sized IP networks. Thanks to its fixing system, only one person is needed to mount it! »

## ORDERING INFORMATION

REF	U	DESIGNATION	LOADING CAPACITY
IDCOF6U450	6U	WALL RACK 19" 6U P.450	40 kg
IDCOF9U450	9U	WALL RACK 19" 9U P.450	40 kg
IDCOF12U450	12U	WALL RACK 19" 12U P.450	50 kg
IDCOF15U450	15U	WALL RACK 19" 15U P.450	50 kg
IDCOF18U450	18U	WALL RACK 19" 18U P.450	60 kg
IDCOF22U450	22U	WALL RACK 19" 22U P.450	90 kg

# IDCOFxxU600

Wall mounted rack depth 600mm



## BENEFITS

- Elegant design, direct mounting system on the wall
- 19 inch upright with automatic grounding
- Reinforced structure that can ensure a static load of up to 90 kg
- Front door with 180° opening

## DESCRIPTION

The 19-inch IDCOFxxU600 cabinet has an elegant design and a reinforced structure allowing a static load of up to 90 kg.

It can be installed in any office or residential environment, while providing a perfect starting point for wiring distribution.

The box, delivered assembled, is easily fixed to the wall by a single person, which saves installation time. It has a direct hanging system on the wall.

Colour: black RAL9005  
Protection index: IP20



« With a depth of 600mm, this box can integrate IPBX or IP encoders. In all cases, the rear 19-inch uprights are adjustable »

## ORDERING INFORMATION

REF	U	DESIGNATION	LOADING CAPACITY
IDCOF6U600	6U	WALL RACK 19" 6U P.600	40 kg
IDCOF9U600	9U	WALL RACK 19" 9U P.600	40 kg
IDCOF12U600	12U	WALL RACK 19" 12U P.600	50 kg
IDCOF15U600	15U	WALL RACK 19" 15U P.600	50 kg
IDCOF18U600	18U	WALL RACK 19" 18U P.600	60 kg
IDCOF22U600	22U	WALL RACK 19" 22U P.600	90 kg



### BENEFITS

- Kit consisting of 4 wheels
- The casters are mounted directly on the structure of the box on 4 threaded supports

### DESCRIPTION

The kit includes 4 castors that attach directly to the IDCOF cabinets of the GENESIA range.

A very practical accessory when it comes to making the installation mobile or easily accessible (sound system or residential application).

### APPLICATION

- IP industrial or commercial : Mobile installation

### STANDARDS

- **SYSTEM** : ISO/IEC 11801 Ed3.0



« The ideal kit to make a mobile cabinet, very practical for installations under desks »

### ORDERING INFORMATION

REF	DESIGNATION	PACKING
IDROULET	KIT of 4 castors for IDCOF box	Unit

# IDVENTIL1

## Fan unit for wall mounted rack



« It is very important to extract the hot air flows to ensure the longevity of the active materials, this fan allows you to do it while being silent »

### BENEFITS

- Single fan mountable directly on the enclosure structure
- Direct power supply 220v/230v 50 Hz - cord supplied

### DESCRIPTION

Heat extraction fan, mounts on the 19-inch cabinets of the GENESIA range.  
Up to 2 fans can be mounted per cabinet.

Materials :  
Thermoplastic and Aluminum - Black - RAL 9005

### APPLICATION

- IP industrial or commercial : Mobile installation

### STANDARDS

- **SYSTEM** : ISO/IEC 11801 Ed3.0

### ORDERING INFORMATION

REF	DESIGNATION	PACKING
IDVENTIL1	Fan unit for 19-inch wall mounted rack	Unit

## Screws, washers and cage nuts for 19 inches accessories

### BENEFITS

- Standard format compatible with most 19-inch accessories
- 2 packaging available:
- Boxes of 50 pieces or compartmentalized bucket with handle of 200 pieces

### DESCRIPTION

Set of cage nuts, washers and M6 screws to fix all types of 19-inch accessories.

The compartmentalized packaging of 200 pcs makes it possible to take the screws everywhere and not to mix the different elements to save time.

### APPLICATION

- IP industrial or commercial

### STANDARDS

- **SYSTEM** : ISO/IEC 11801 Ed3.0



« A quality hardware kit and clever packaging perfectly suited to construction sites »

### ORDERING INFORMATION

REF	DESIGNATION	PACKING
IDVEC50	Screws, cage nuts and washers - box of 50 pieces	Unit
IDVEC200	Screws, cage nuts and washers - bucket of 200 pieces	Unit





« NF and CE certified, these power supplies are of excellent quality. They can power switches, routers or any other computer equipment »

### AVANTAGES

- 8-socket 19-inch rack-mount aluminum power supply unit with or without switch
- Compliant with standard NF 61-314 and CE certified
- Direct 220v/230v 50hz power supply with 2m cord and UTE plug
- The sockets are angled at 45° for better accessibility

### DESCRIPTION

The power supply is made up of 8 2P+T sockets in an anodized aluminum profile, it is directly rackable in a bay or a 19-inch cabinet.

the IDALIM8I model is equipped with a luminous switch which allows direct visualization of the power supply status.

The 2m H05VVF 3G1.5mm<sup>2</sup> cord is very resistant, especially to abrasion.

### APPLICATION

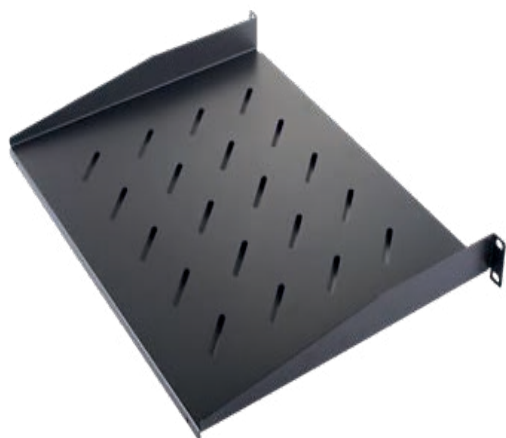
- IP industrial or commercial

### STANDARDS

- NF 61-314

### ORDERING INFORMATION

REF	DESIGNATION	PACKING
IDALIM8I	8-outlet aluminum power supply with switch - 19 inches	Unit
IDALIM8	8-outlet aluminum power supply - 19 inches	Unit



« Suitable for adding non-rackable devices (routers, fiber optic modems, amplifiers, etc.), this shelf can be used to complete any type of 19-inch container»

### BENEFITS

- Perforated to ensure natural cooling
- Fixing by cage nuts directly on the uprights
- Permissible load up to 20 kg

### DESCRIPTION

1U 19-inch perforated shelf that mounts directly on the 19-inch uprights of IDCof cabinets, allows you to store different types of devices (routers, internet box, etc.).

Materials: Metal - Black: RAL 9005  
Available in 1U or 2U

### APPLICATION

- IP industrial or commercial

### STANDARDS

- **SYSTEM** : ISO/IEC 11801 Ed3.0

### ORDERING INFORMATION

REF	DESIGNATION	PACKING
IDPLFIX1U250	Fixed shelf 1U depth 250mm	Unit
IDPLFIX2U250	Fixed shelf 2U depth 250mm	Unit



« An effective accessory for organizing copper or optical patch cords. The brush prevents dust from entering the racks or cabinets»

## BENEFITS

- Optimizes the organization of cabinets or racks
- Direct fixing by cage nuts

## DESCRIPTION

Essential accessory for organizing patch cords in 19-inch racks or cabinets.

The opening is wide to allow as many cords as possible to pass through.

Materials: Metal and thermoplastic - Black - RAL 9005

## APPLICATION

- IP industrial or commercial

## STANDARDS

- **SYSTEM** : ISO/IEC 11801 Ed3.0

## ORDERING INFORMATION

REF	DESIGNATION	PACKING
IDPASSF1U	1U 19-inch brush panel	Unit



### BENEFITS

- Helps organize patch cords
- Direct fixing by cage nuts

### DESCRIPTION

The IDGUIDC1U cord guide is ideal for organizing a bay or a patch box.

These 4 metal hooks are deep enough to give enough space for the passage of 24 cords.

Materials: Metal - Black - RAL 9005

### APPLICATION

- IP industrial or commercial

### STANDARDS

- **SYSTEM** : ISO/IEC 11801 Ed3.0



« Rigid hooks that hold cords and allow flows to be organized even when the density is high »

### ORDERING INFORMATION

REF	DESIGNATION	PACKING
IDGUIDC1U	1U cable organizer 4 rings - 19 inches	Unit



« An aesthetic pleasure but not only...it also serves to insulate the inside of the box from the flow of hot air »

### BENEFITS

- Used to seal empty parts of bays or enclosures to guarantee front/rear air flow
- Direct fixing by cage nuts

### DESCRIPTION

The IDOB1U shutter ensures a quality finish to your achievements and guarantees that the flows hot air/cold air are not mixed.

Materials: Metal - Black - RAL 9005

### APPLICATION

- IP industrial or commercial

### STANDARDS

- **SYSTEM** : ISO/IEC 11801 Ed3.0

### ORDERING INFORMATION

REF	DESIGNATION	PACKING
IDOB1U	1U 19 inch obturator panel	Unit





« UHD or 4K, this cable allows a high quality connection to make the most of high-end video sources »

### BENEFITS

- Available in different lengths
- HDMI gold contact connector
- Compatible with Quad TV and 4K

### DESCRIPTION

GENESIA HDMI 2.0 cords help preserve a quality image by ensuring an optimal connection between the equipment and the screen.

### APPLICATION

- Audio/Video HDMI

### STANDARDS

- Quad TV
- 4K

### ORDERING INFORMATION

REF	DESIGNATION	LENGHT	PACKING
IDCH2MI02	HDMI 2.0 cords Male/Male 2 meters	2m	Unit
IDCH2MI03	HDMI 2.0 cords Male/Male 3 meters	3m	Unit
IDCH2MI05	HDMI 2.0 cords Male/Male 5 meters	5m	Unit
IDCH2MI10	HDMI 2.0 cords Male/Male 10 meters	10m	Unit
IDCH2MI15	HDMI 2.0 cords Male/Male 15 meters	15m	Unit
IDCH2MI20	HDMI 2.0 cords Male/Male 20 meters	20m	Unité



« Essential tools to ensure that the connection is compliant and deliver an installation that will give full satisfaction to users »

## BENEFITS

- Allows identification of continuity problems
- IDTESTRJ : Fast and economical continuity tester
- IDTESTRES: Gives a precise indication of the quality of transmission

## DESCRIPTION

Continuity and network testers, autonomous, battery operated.

They make it possible to check the conformity of the wiring plan for both RJ45 and RJ11/12 links.

The IDTESTRES is used to check the performance of the transmission.

## APPLICATION

- IP industrial or commercial

## STANDARDS

- **SYSTEM** : ISO/IEC 11801 Ed3.0

## ORDERING INFORMATION

REF	DESIGNATION	PACKING
IDTESTRJ	RJ45 and RJ11/12 wiremap tester	Unit
IDTESTRES	RJ45 network tester	Unit



- 1 × crimping tool for RJ45/RJ12/RJ11 plug
- 1 × Insertion Tool 110
- 1 × professional stripper for LAN and COAX
- 1 × USB/LAN / 9 Multi-modular tester
- 2 × connection lines
- 10 RJ45 plugs and 10 RJ12 plugs



« An affordable but complete kit that allows you to make multiple types of connections. The continuity tester is a must! »

### BENEFITS

- All in one
- Insertion tool 110 for connection to telephone drawers
- RJ45 and RJ11 plugs for on-site troubleshooting
- continuity tester

### DESCRIPTION

Tool kit to create IP networks.

### APPLICATION

- IP industrial or commercial

### STANDARDS

- **SYSTEM** : ISO/IEC 11801 Ed3.0

### ORDERING INFORMATION

REF	DESIGNATION	PACKING
IDTOOLKIT1	Network Testing and Tools Pack - Premium	Unit



- 1 × crimping tool for RJ45/RJ12/RJ11 plug
- 1 × Insertion Tool 110
- 1 × single stripper
- 1 × Multi-network LAN tester
- 2 × connection lines
- 10 RJ45 plugs and 10 RJ12 plugs



« This professional kit provides the essential network technician tools. Crimping, preparation tools, insertion or tester, nothing is missing! »

### BENEFITS

- All in one
- Insertion tool 110 for connection to telephone drawers
- RJ45 and RJ11 plugs for on-site troubleshooting
- Network Link Tester

### DESCRIPTION

Tool kit to create IP networks.

### APPLICATION

- IP industrial or commercial

### STANDARDS

- **SYSTEM** : ISO/IEC 11801 Ed3.0

### ORDERING INFORMATION

REF	DESIGNATION	PACKING
IDTOOLKIT2	Network Testing and Tools Pack - Professional	Unit



### BENEFITS

- Professional quality
- Allows the preparation of data and coaxial cables
- Adjustment of the stripping diameter to adapt to different types of shielding

### DESCRIPTION

Preparation and stripping tool for data and coaxial cables.

Allows removal of sheath and straps by rotation.

### APPLICATION

- IP industrial or commercial

### STANDARDS

- **SYSTEM** : ISO/IEC 11801 Ed3.0



« Always have with you to save time and make sure you don't damage the cable during preparation »

### ORDERING INFORMATION

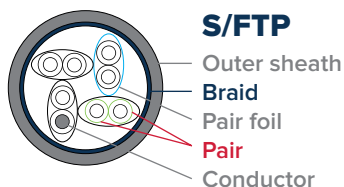
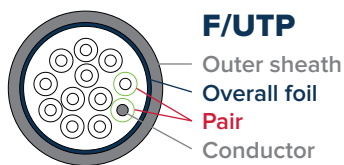
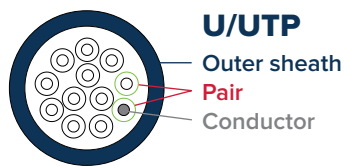
REF	DESIGNATION	PACKING
IDDEGAIN	RJ and Coax stripping tool	Unit



# TECHNICAL INFORMATION



## UNDERSTANDING CABLE CONSTRUCTION



STRUCTURE :

**XX / Y ZZ**

**OVERALL SHIELDING**

U = unshielded  
F = Foil  
S = Shield (Braid)  
SF = Braid & foil

**PAIR**

TP = Twisted pairs

**PAIRS INDIVIDUAL FOIL**

U = Unshielded  
F = Foil

### Examples

<b>U/UTP</b>	Unshielded / Unshielded Twisted Pair
<b>F/UTP</b>	Foiled / Unshielded Twisted Pair
<b>U/FTP</b>	Unshielded / Foiled Twisted Pair
<b>S/FTP</b>	Braid screened / Shielded Twisted
<b>SF/UTP</b>	Shielded Foiled / Unshielded Twisted Pair

## CATEGORY SUMMARY & CONNECTOR TYPE (ISO 11801)

BANDWIDTH (MHZ)	CATEGORY	CLASS	APPLICATION	APPROVED	TYPE OF CONNECTOR
16	3	C	10 Mbits Ethernet	1991	RJ45
100	5e	D	100 Mbits, 1 Gbit, 2.5 Gbits Ethernet	1995	RJ45
250	6	E	1 Gbit, 2.5 Gbits, 5 Gbits Ethernet	2002	RJ45
500	6A	EA	10 Gbits Ethernet	2007	RJ45
600	7	F	10 Gbits Ethernet	2002	GG45 & TERRA
1000	7A	FA	10 Gbits Ethernet & multimedia	2009	GG45 & TERRA
2000	8.1	I	25 Gbits & 40 Gbits Ethernet	2016	RJ45
2000	8.2	II	25 Gbits & 40 Gbits Ethernet & multimedia	2016	GG45 & TERRA

Switch



Patch panel

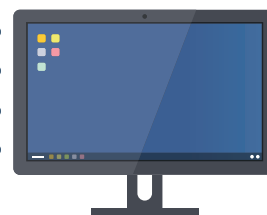


Cat.5e - 10 Mbits to 1 Gbit





Cat.6 - 10 Mbits to 5 Gbits

Cat.6A - 10 Mbits to 10 Gbits






































Cat.7 - 10 Mbits to 10 Gbits



## INSERTION LOSS (ISO 11801)

FIBER TYPE	OM3	OM4	OM5	OS2
LIGHT SOURCE	VCSEL	VCSEL	SWDM (MUX/DEMUX)	LASER
	50/125	50/125	50/125	9/125
STRUCTURE				
BANDWIDTH 850 nm	1500 MHz/km 2000 MHz/km (VCSEL source)	3500 MHz/km 4700 MHz/km (VLSSEL source)	3500 MHz/km 4700 MHz/km (VCSEL source)	-
BANDWIDTH 953 nm	-	-	1850-2470 MHz/km	-
BANDWIDTH 1300 nm	500 MHz/km	500 MHz/km	500 MHz/km	-
BANDWIDTH 850 nm (TYPICAL)	2.5 dB/km	2.5 dB/km	2.5 dB/km	-
BANDWIDTH 953 nm (TYPICAL)	-	-	1.8 dB/km	-
BANDWIDTH 1300 nm (TYPICAL)	0.8 dB/km	0.8 dB/km	0.8 dB/km	-
BANDWIDTH 1310 nm (TYPICAL)	-	-	-	0.35 dB/km
BANDWIDTH 1550 nm (TYPICAL)	-	-	-	0.22 dB/km

## MATERIAL PROPERTIES

	POLYVINYL CHLORIDE (PVC)	LSZH POLYOLEFIN (LSZH)	POLYETHYLENE (PE)	POLYURETHANE (PUR)	NITRILE RUBBER (NBR)	POLYAMIDE (PA)
MECHANICAL RESISTANCE						
RODENTS						
CRUSH						
INSTALLATION	Duct	Inter-building Campus	Burried	Harsh environment	Harsh environnement	Duct
TORSION						
BENDING						
TENSILE LOAD						
TEARING						



Ideal



Adapted



Not applicable





# GENESIA<sup>®</sup>

POWERED BY ID CABLES

This catalogue is offered by :



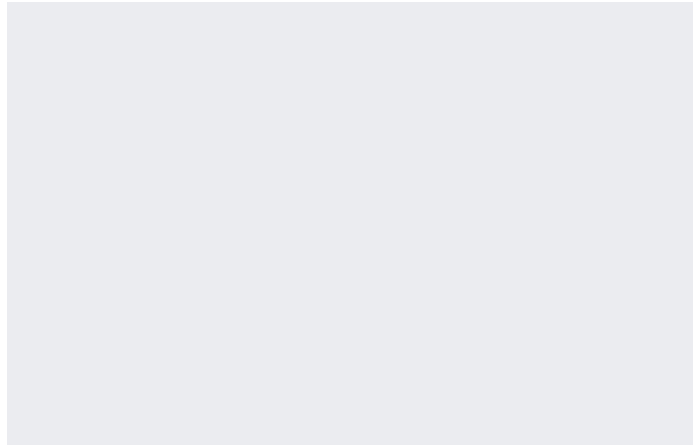
**ID CABLES**

3 Avenue Jeanne Garnerin  
91320 Wissous - France  
Bâtiment Le Cormoran  
Tél. +33 (0)1 69 79 14 04  
Fax +33 (0)1 69 79 14 35

[www.id-cables.fr](http://www.id-cables.fr)



This catalogue is offered by :



**ID CABLES**

3 Avenue Jeanne Garnerin  
91320 Wissous - France  
Bâtiment Le Cormoran  
Tél. +33 (0)1 69 79 14 04  
Fax +33 (0)1 69 79 14 35

[www.id-cables.fr](http://www.id-cables.fr)



member of the TKH Group <

